

Smart Thermostat User Guide



The thermostat is suitable for electric heating, water heating, wall-hung boilers and boiler temperature control systems, and can be used in smart homes, shopping malls, and industrial operations. Please confirm that this product is suitable for your heating equipment before installation.

Thank you for purchasing our products, please read the following terms before installation and use:

1. Before installation, please make sure to keep the power off.
2. Please arrange for professionals to install.
3. Please strictly follow the wiring diagram for wiring installation; installation to the wall, and the neutral line and the live line should not be reversed to avoid damaging the temperature controller.
4. If a hard plastic wire is used in the installation process, it must be bent to an appropriate angle in advance.
5. The installation position should be about 1.4m away from the ground, away from other heat sources or flowing air, like direct sunlight, wind which is representative of room temperature.
6. Load shall be provided according to the marked current and overload is prohibited.
7. Please contact the after-sales service for equipment failure, please do not try to repair it yourself.
8. When the LCD temperature control panel works, it needs stable power supply support. Abnormal power failure and instantaneous power supply flash off may cause the temperature control panel to close or not work

normally. No matter what kind of power failure, the power supply system may stop working. Therefore, when the panel is closed during normal heating, please start the temperature control panel in time to enter the working state.

9. The LCD temperature control panel has the function of automatic memory, which can automatically switch to the working state before power failure when the power supply is cut off again. The temperature control system equipped with electric actuator can keep heating and cut off heating when power is off, which should be selected according to actual needs.

Warning: the wiring must be correctly connected according to the electrical wiring diagram. Do not put water, mud and other impurities into the thermostat, otherwise it will cause damage to the device!

FEATURES

On Appearance

1. Convenient operation creates convenient life.
2. Touch screen display with backlight is easy to read, even in the dark.
3. Glass frame, showing fashion.
4. Fashion design blends in with any decor.
5. Modular design, more convenient installation.

On Functionality

1. 1°C Accuracy keeps temperature within the level you set.
2. Data memory when power is off.
3. 5+2 six periods programmable maximize comfort and economy.
4. Croat thermostat group to centralized control.

Integrated with Amazon Echo, Google Home, Tmall Genie.

TECHNICAL DATA

Power Supply: 110-240VAC, 50-60HZ

Current Load: 5A (water heating/water boiler/gas boiler)

16A (electric heating)

Sensor: NTC thermistor

Accuracy: $\pm 1^{\circ}\text{C}$

Timing Error: $< 1\%$

Set Temp. Range: 5~35°C

Display Temp: 0~35°C

Power Consumption: $< 1\text{W}$

Buttons: Capacitive Touch Buttons

Screen: negative LCD screen

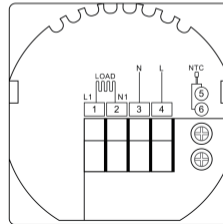
Shell Material: PC+ABS (flame retardant)

Ambient Temp./Humidity: 5~95%RH (non condensing)

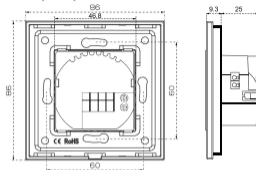
In the box you will find

1. Thermostat 1 pc
2. Screws 2 pcs
3. User Guide 1 pc
4. Floor Sensor (1.5m) 1 pc (Floor sensor is Optional)

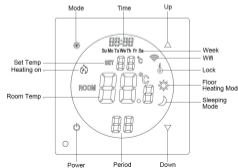
WIRING



DIMENSION(mm)



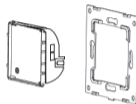
SHOW DESCRIPTION



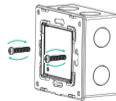
INSTALLATION

Keep power off before installation

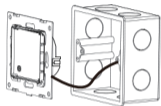
Step 1. The power module is snapped into the mounting iron plate.



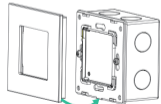
Step 3. Fasten the mounting plate with screws.



Step 2. Wiring. Load into the appropriate terminals.



Step 4. Snap the glass panel onto the mounting plate.



INSTRUCTIONS

1. Power On/off: Press to turn the thermostat on/off.
2. Temperature setting: When power is on, press the "∨" key to decrease the setting temperature, and press the "∧" key to increase the setting temperature. The temperature changes by 1 °C each time the button is pressed.
3. Locking your Thermostat
Press and hold the for 5 seconds to lock/unlock your thermostat.
4. Hold and press button , enter to sleeping mode.
5. Hold and press button , to display the temp. of the external probe.
6. Adjusting/setting the Program Schedules

Can use APP for one week programming setting by following: "Setting" – "Weekly-Programming" – "Week Program" in APP.

Advanced options

When power is off, press and hold for 5 seconds. Then press button to enter the stepup mode menu. Advanced options table.

Cod e	Function	Range unit	Default value
00	Operation Mode	2 Floor Heating	2
02	Built in temperature correction	-9~9°C	-2
03	External temperature correction	-9~9°C	-0
04	Humidity correction	-9~9°C	0
05	Start up temperature difference	0.5~5°C	0.5
06	Low temperature protection	1~5°C "..."	"..." of
07	External temperature protection	35-99°C	50
08	Sensor Type	0: Internal Senso 1: External Senso 2: Internal&External Sensor (Internal sensor to control the temp., external sensor to limit the temp.)	0
09	Filter replacement reminder	0-365days	100
10	Power down and restart	0~2 0: shut down 1: Power on 2: Memory	0
11	Minimum set point	5~35	5
12	Maximum set point	35~50	35
14	Standby brightness	10~100	10

Alarm code	content
E1	Open circuit of indoor temperature probe sensor
E2	Short circuit of indoor temperature probe sensor
E3	Open circuit of external temperature probe sensor
E4	Short circuit of external temperature probe sensor
E5	Indoor high temperature protection
E6	External high temperature protection
E7	Filter replacement reminder

Wifi connection operation instructions

After power on, the thermostat will be on pairing status (WIFI icon flashing quickly). If not flashing, please press the icon for about 5 seconds.

Install the APP



Figure 1-1



Figure 1-2 IOS/AndroidS

Search for 'Smartlife', in the Apple Store or Google Play or scan the QR code above with a browser (1-2). Complete the registration and installation according to the guidance of the APP.

For the specific steps of Wifi connection, please scan the QR code below to get related videos.